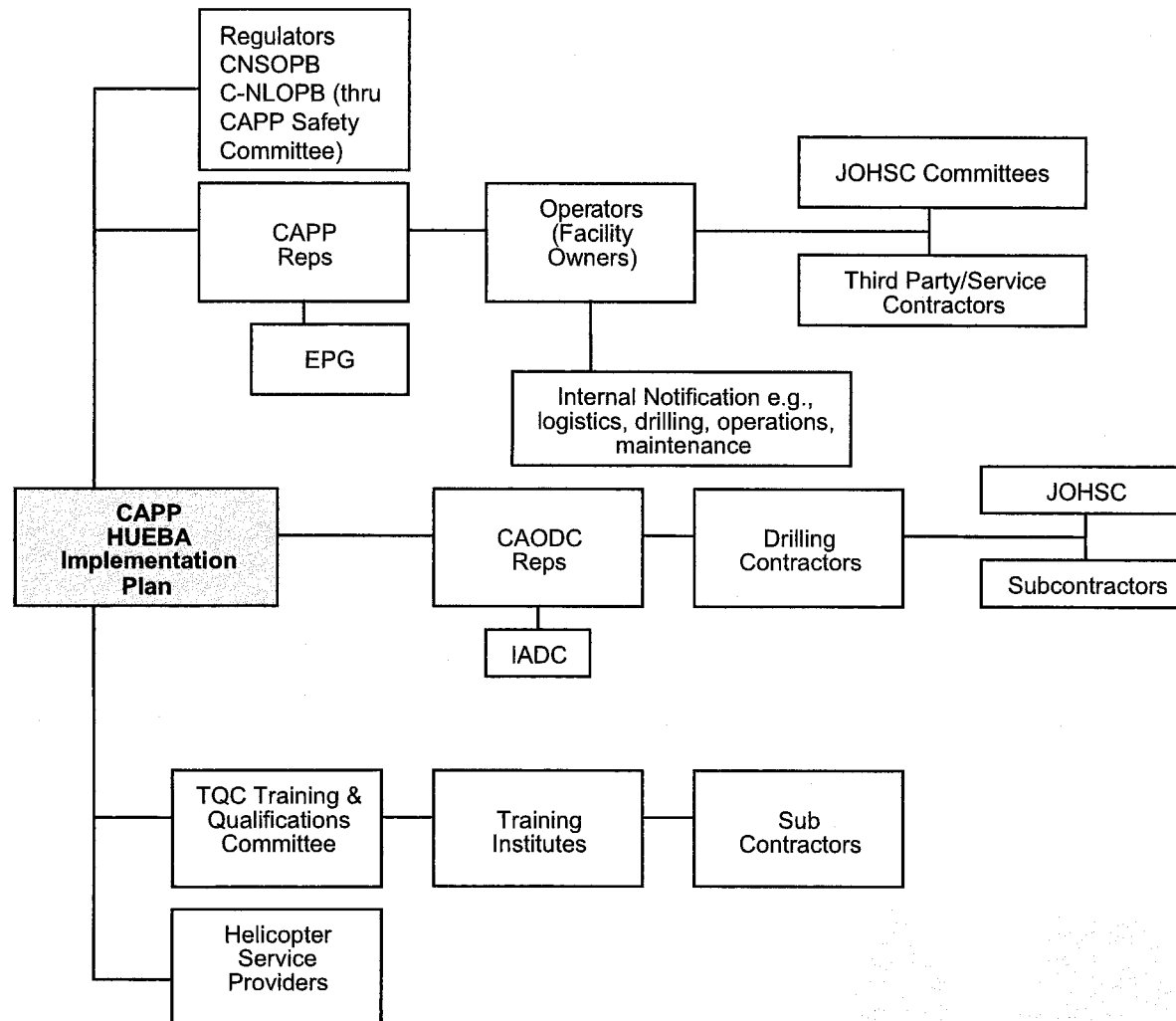


- **The Communications Plan provides:**
 - consistent messaging in NS & NL
 - presentations for stakeholders, workforce, management, etc.
 - tools for communicating HUEBA information (i.e. FAQ, reference card for seat pocket, posters, heliport process diagrams)
 - Communications Tree
 - Identifies roles and responsibilities in communicating information
 - Identifies stakeholders who must be notified and engaged in some aspect of HUEBA implementation

HUEBA TF – Implementation Plan



- **Communications Tree**



- **Training**

- **In-water**

- In-water training will be made available prior to the date of implementation and will continue to be available on an on-going basis:
 - HUEBA component is included in the basic safety courses required of all offshore workforce personnel (BST, BST-R, OSI, OHS)
 - HUEBA stand-alone training module will be available in NS and NL

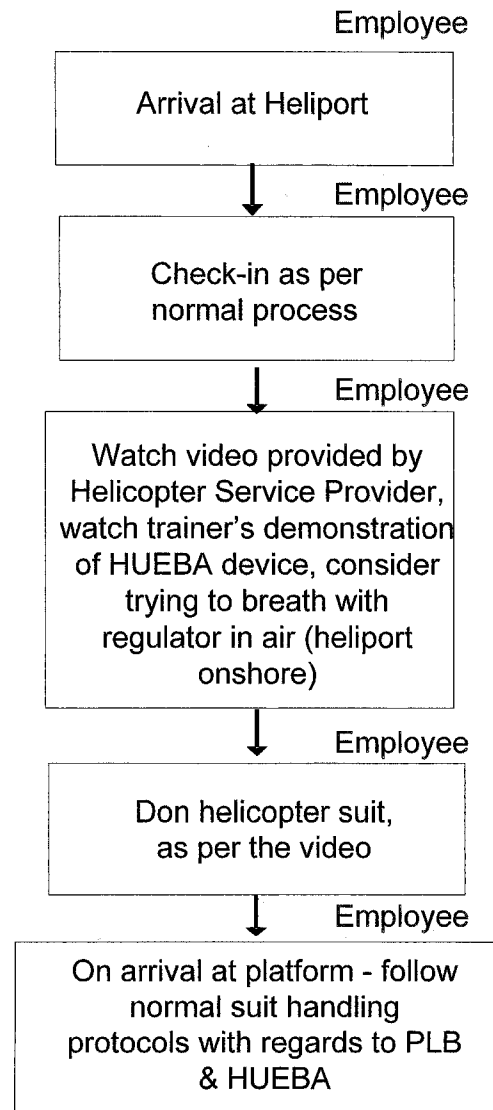
- **Pre-flight Safety Video**

- A perpetual HUEBA component added to the pre-flight safety videos shown to all personnel prior to all flights (onshore and offshore)

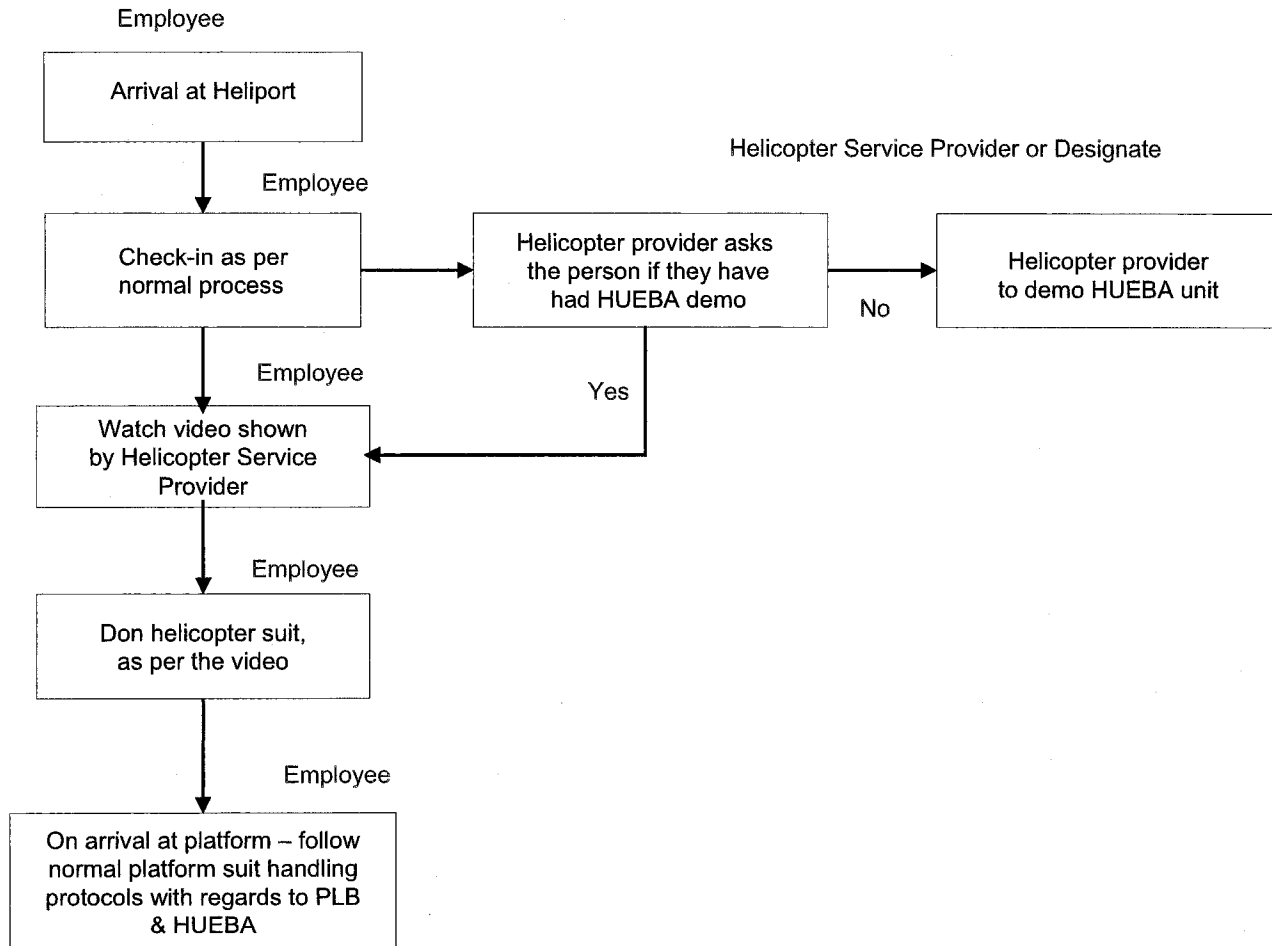
- **Implementation Phase**

- Duration of the *implementation phase* will be determined by operators and is dependent upon workforce rotation and in-water training schedules:
 - Demonstration of the HUEBA at the heliports by a trained representative (onshore and offshore)
 - Provisions to allow personnel to try breathing through a regulator in air at the heliport (onshore)

Helicopter Underwater Emergency Breathing Apparatus (HUEBA) Implementation Process



Helicopter Underwater Emergency Breathing Apparatus (HUEBA) Post-Implementation Process



Review FAQ (handout)